

Single impeller centrifugal pumps with hydraulic components manufactured from stainless steel AISI 304, suitable for pressure boosting, water supply, treatment & irrigation. Air conditioning systems and general water pumping including moderately aggressive liquids



SPECIFICATIONS

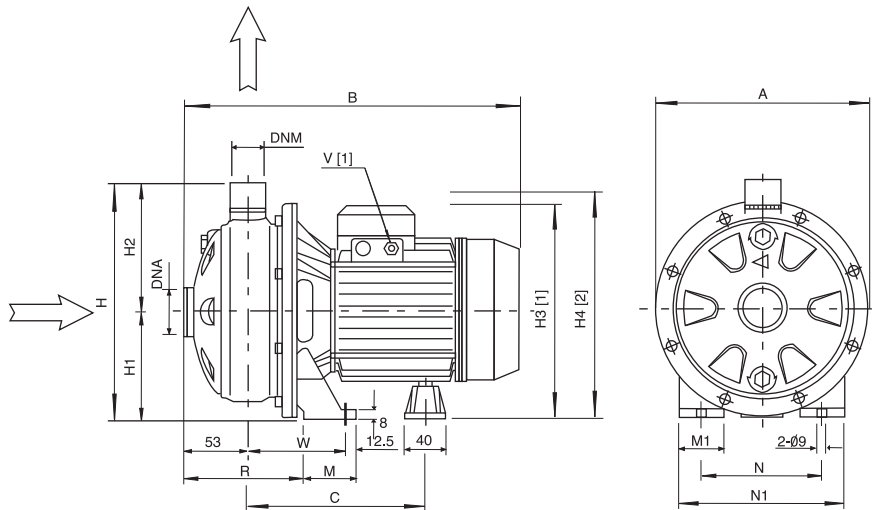
- * Maximum working pressure: 8 bar
- * Maximum liquid temperature:
60°C for uses of model CX-50, CX-75, CX-100
90°C for other models

MATERIALS

- * Pump body, impeller, diffuser and casing cover in AISI 304
- * Shaft in AISI 303
- * Bracket and motor casing in alluminium
- * Mechanical seal in carbon/ceramic/NBR
- * Special mechanical seal are available on demand

TECHNICAL DATA

- * T.E.F.C. 2 poles motor
- * Insulation class F
- * Protection degree IP55
- * 1~230V ± 10% 50Hz, 3~230/400V ± 10% 50Hz
- * Permanent split capacitor and automatic thermal overload protection for single-phase version
- * Thermal protection to be provided by the user for three-phase version

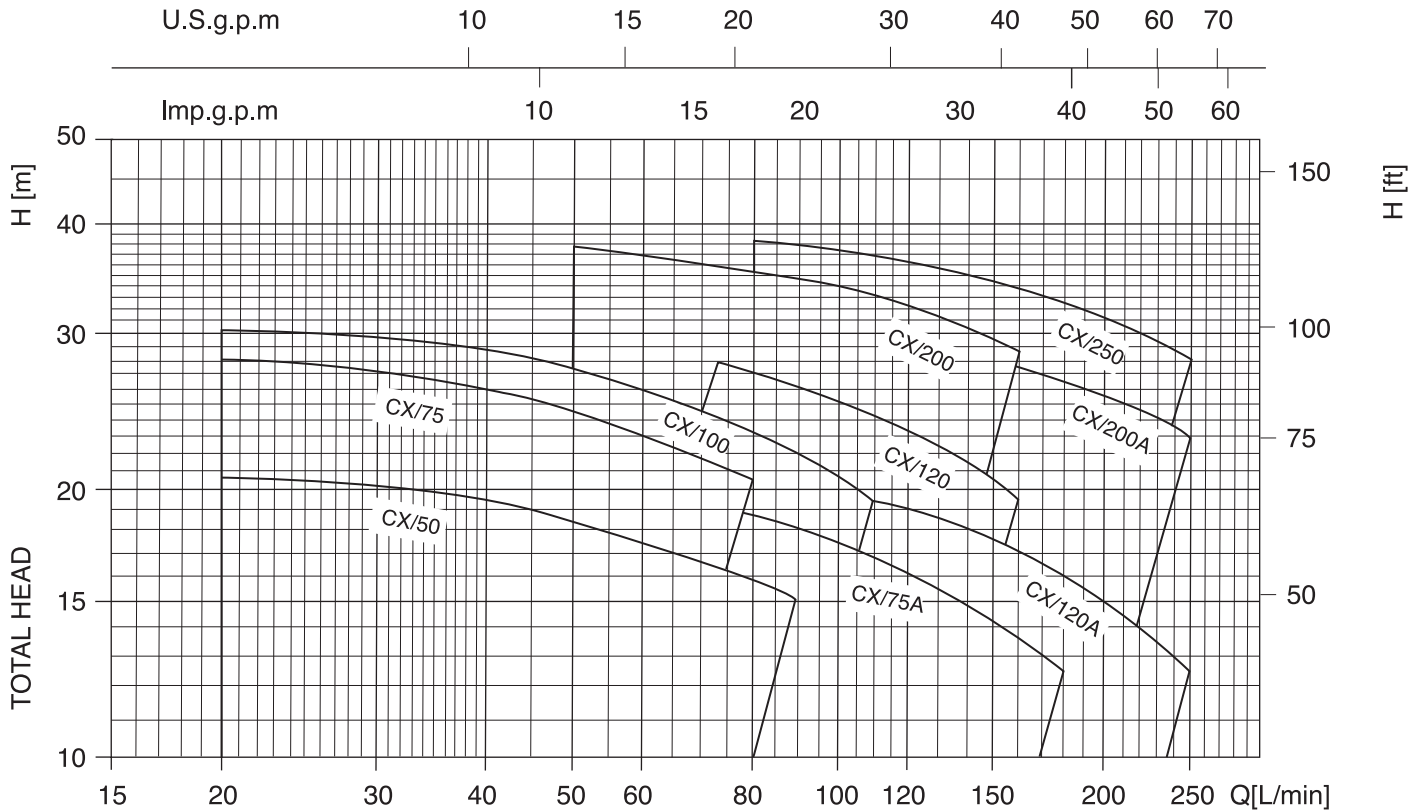


DIMENSIONAL TABLE

| Pump type | | Dimensions (mm) | | | | | | | | | | | | | | | | | Weight Kg | | | |
|--------------|-------------|-----------------|-----|-----|-----|-------|-----|-------|-----|-----|----|----|-----|-----|-------|--------|------|--------|-----------|--------------|-------------|--|
| | | A | B | | C | H | H1 | H2 | H3 | H4 | M | M1 | N | N1 | R | T | W | DNA | DNM | Single-phase | Three-phase | |
| Single-phase | Three-phase | | 1~ | 3~ | | | | | | | | | | | | | | | | | | |
| CX/50 | CX/50 | 208 | 318 | 318 | 178 | 229,5 | 106 | 123,5 | 209 | 215 | 50 | 38 | 120 | 160 | 108 | PG11 | 92,5 | 1 1/4" | 1" | | | |
| CX/75 | CX/75 | 208 | 318 | 318 | 178 | 229,5 | 106 | 123,5 | 209 | 215 | 50 | 38 | 120 | 160 | 108 | PG11 | 92,5 | 1 1/4" | 1" | 9,1 | 9,1 | |
| CX/100 | CX/100 | 208 | 318 | 318 | 178 | 229,5 | 106 | 123,5 | 209 | 215 | 50 | 38 | 120 | 160 | 108 | PG11 | 92,5 | 1 1/4" | 1" | 10,4 | 10,4 | |
| CX/75A | CX/75A | 208 | 318 | 318 | 178 | 229,5 | 106 | 123,5 | 209 | 215 | 50 | 38 | 120 | 160 | 108 | PG11 | 92,5 | 1 1/4" | 1" | 11,9 | 11,9 | |
| CX/120 | CX/120 | 208 | 318 | 318 | 178 | 229,5 | 106 | 123,5 | 209 | 215 | 50 | 38 | 120 | 160 | 108 | PG13,5 | 92,5 | 1 1/4" | 1" | 10,4 | 10,4 | |
| CX/200 | CX/200 | 232 | 345 | 345 | 199 | 250 | 118 | 132 | 235 | 253 | 55 | 40 | 140 | 180 | 105,5 | PG13,5 | 95 | 1 1/4" | 1" | 12,5 | 12,5 | |
| CX/120A | CX/120A | 208 | 318 | 318 | 178 | 229,5 | 106 | 123,5 | 209 | 215 | 50 | 38 | 120 | 160 | 108 | PG13,5 | 92,5 | 1 1/2" | 1" | 17,2 | 16,2 | |
| CX/200A | CX/200A | 208 | 345 | 345 | 199 | 229,5 | 106 | 123,5 | 223 | 240 | 55 | 40 | 140 | 180 | 105,5 | PG13,5 | 95 | 1 1/2" | 1" | 16,3 | 11,4 | |
| | CX/250 | 232 | - | 345 | 199 | 250 | 118 | 132 | 235 | - | 55 | 40 | 140 | 180 | 105,5 | - | 95 | 1 1/2" | 1" | 15,3 | 14,2 | |

PERFORMANCE CHART

series (according to ISO 9906 grade 2)

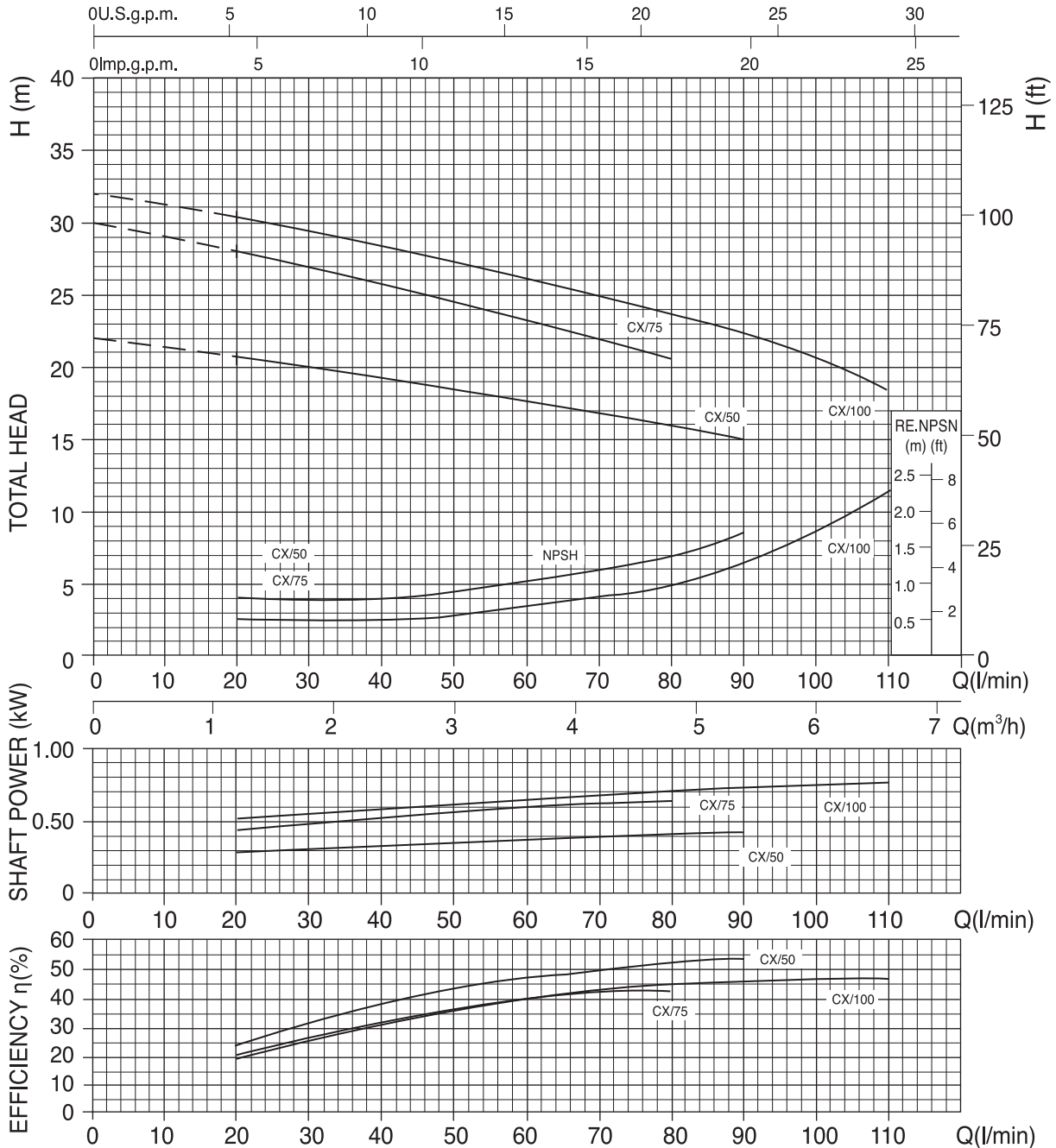


PERFORMANCE TABLE

| Pump type | | kW | Capacitor | | Absorbed Current (A) | | | H/min m ³ /h | Q=Capacity | | | | | | | | | |
|---------------------------|------------------------------|------|-----------|-----|----------------------|--------------------------|-----|----------------------------|------------|---------|-----------|-----------|------------|------------|------------|-------------|-------------|-----------|
| Single-phase 230V 50Hz | Three-phase 230/400V 50Hz | | μF | Vc | Single-phase | Three-phase 230V 400V | | | 20 1,2 | 50 3 | 80 4,8 | 90 5,4 | 110 6,6 | 130 7,8 | 160 9,6 | 180 10,8 | 210 12,6 | 250 15 |
| CX/50 | CX/50 | 0,37 | 12,5 | 450 | 3,1 | 2,4 | 1,4 | 20,7 | 18,4 | 15,9 | 15 | - | - | - | - | - | - | - |
| CX/75 | CX/75 | 0,55 | 16 | 450 | 4,6 | 3,5 | 2,0 | 28 | 24,5 | 20,5 | - | - | - | - | - | - | - | - |
| CX/100 | CX/100 | 0,75 | 20 | 450 | 5,6 | 4,0 | 2,3 | 30,3 | 27,2 | 23,6 | 22,3 | 19,5 | - | - | - | - | - | - |
| CX/75A | CX/75A | 0,55 | 16 | 450 | 4,6 | 3,2 | 1,9 | - | 20,5 | 18,7 | 18,1 | 16,8 | 15,5 | 13,7 | 12,5 | - | - | - |
| CX/120 | CX/120 | 0,9 | 31,5 | 450 | 6,9 | 5,2 | 3,0 | - | 29,5 | 27,1 | 26,1 | 24,3 | 22,4 | 19,5 | - | - | - | - |
| CX/200 | CX/200 | 1,5 | 40 | 450 | 9,3 | 7,0 | 4,0 | - | 37,5 | 35,5 | 34,6 | 33,1 | 31,4 | 28,6 | - | - | - | - |
| CX/120A | CX/120A | 0,9 | 31,5 | 450 | 6,3 | 4,7 | 2,7 | - | - | 20,6 | 20,2 | 19,5 | 18,5 | 17,1 | 16,1 | 14,6 | 12,5 | - |
| CX/200A | CX/200A | 1,5 | 40 | 450 | 10,7 | 7,0 | 4,0 | - | - | 31 | 30,6 | 29,7 | 28,9 | 27,5 | 26,6 | 25,1 | 23 | - |
| | CX/250 | 1,85 | - | 450 | - | 8,2 | 4,8 | - | - | 38 | 37,5 | 36,4 | 35,3 | 33,6 | 32,4 | 30,5 | 28 | - |

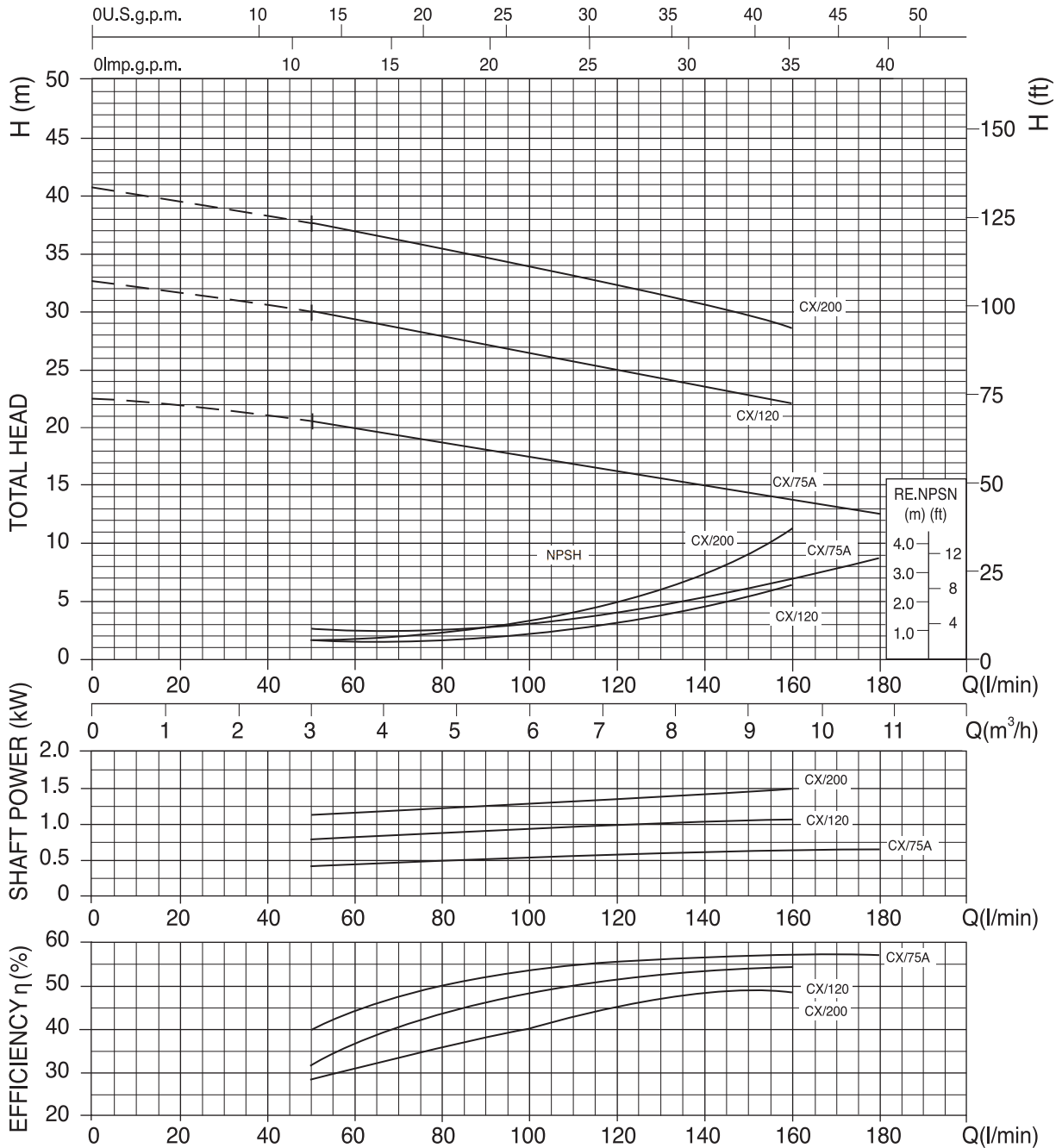
PERFORMANCE CURVES CX 50-100

series (according to ISO 9906 grade 2)



PERFORMANCE CURVES CX 75A-200

series (according to ISO 9906 grade 2)



PERFORMANCE CURVES CX 120A-250

series (according to ISO 9906 grade 2)

